

# X-Viewer

This is the helpfile for the filebrowser that are used for accessing the CD-Rom products from Synchron Data.

- [Introduction](#)
- [Main Window](#)
- [Areaview Window](#)
- [ZIP-view Window](#)
- [Fileviewer Window](#)
- [Pictureviewer Window](#)
- [Upload Window](#)
- [Searching Window](#)
- [Tips and Tricks](#)
- [How to contact us](#)

(c) 1996 Synchron Data, All rights reserved.

# File Menu

## File

### **Set CD-Rom drive**

Normally the viewer tries to locate the CD-Rom by itself, but if it can't find it, you can set the correct location here.

### **New CD-Rom**

You can use this option to update the arealist if you have changed the CD-Rom while the program is running.

### **Reset Settings**

Lets you restore all the settings to the default vaules. This can be useful if you have moved/resized the windows and you want them back at the original position.

### **Save Settings**

Saves most of the windows size, positions and fonts to a setup file and next time you start the viewer these settings will be automatically loaded. The settings file is called XVIEWER.INI and its located in the \WINDOWS directory.

### **Quit**

**Exits the viewer program.**

# Edit

Edit

**Set Font**

Here you can set the style of the text in the arealist.

# Search menu

## Search

### Search (Control + F)

This option lets you search the whole CD-Rom for a given keyword. The search will be made in all fileareas on the CD. A maximum of 1000 search hits will be listed. Local search can not be done from this menu.

Press here for more information on the [search window](#)

# Info menu

## Info

### Help

Will show this helpfile

### About Shareware

Will show a message defining what shareware is.

### About Synchron Data

Will show a message about our Company.

### About Browser

Displays the aboutbox for this program

## Area viewer window

The Area viewer window will appear everytime you have selected an area in the main window or made a successful keyword search. This window shows you the files in the selected area or the files that matched the search. If you click on one file an action will be performed depending on the the selection in the "function" menu.

You can scroll the window Up or Down using the scrollbar to the right of the window or using the Cursor/Page Up/Down keys.

The menu on top of the window has the following choices:

### Menus

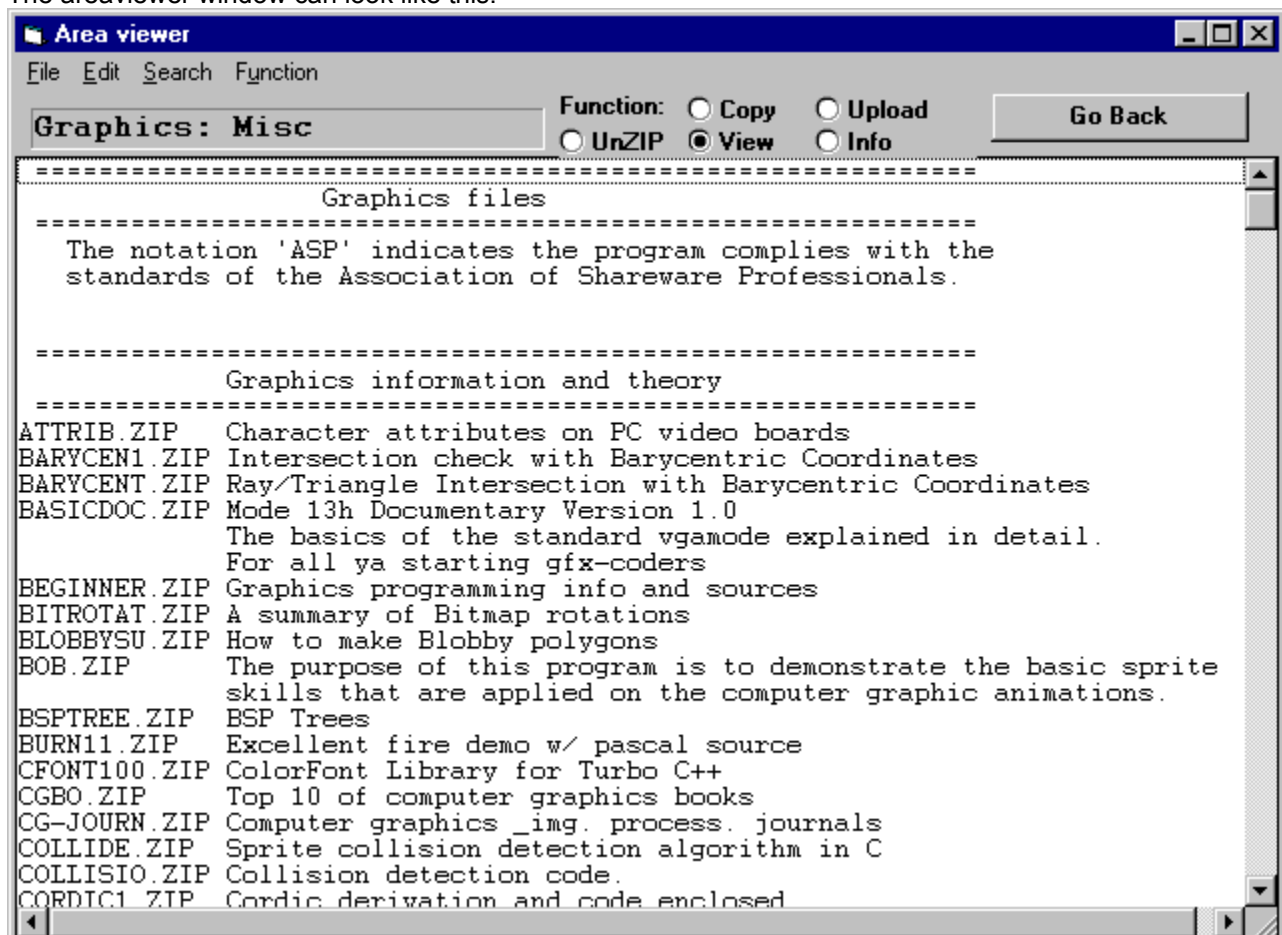
[File](#)

[Edit](#)

[Search](#)

[Function](#)

The areaviewer window can look like this:



# File

## File

### Close (F1)

Exits to the main Window.

The **Escape** or **F1** key on your keyboard will do the same.

# Edit menu

**Edit**

**Set Font**

Here you can set the style of the text in the area viewer.



# Search menu

**Search**

**Search (Control + F)**

This function has the same function as the Search in the previous windows. The difference is that here you can select if you want to search in this area(local search) or in all areas(global).

# Function menu

Here you select what you want to do when you select a file with the left mousebutton.

If you select a file and press shift at the same time the length of file will be displayed at the top of the window.

These functions can also directly be selected through the function buttons just above the filelist window.

## Function

### View file

If the filename you have selected ends with .ZIP an another window will appear with a list of the contents of the .ZIP file. From this list you can then select what file inside the .ZIP to display.

The **escape key** or "Go Back" button will close the window. If you press on the big "**X**" button, the first file in the list will be selected.

On the bottom of the "Zip Contents" window you can select what you want to do with the file you select. The function of these buttons are the same as the one in filelist window.

If the filename doesn't end with .ZIP the fileviewer window or the picture viewer will appear.

### Copy file

This function allows you to copy the selected file to an another drive for later use. If you select a file with this option selected a fileselector will appear where you can select the target drive and directory.

### Upload file

This function is useful if you want to transfer the selected file to an another computer or calculator using the standard RS-232 serial port.

[Klick here more information about the serial transfere window.](#)

### Show Fileinfo

Will display a dialogbox with the filelength of the selected file.

Another way to display the length of a file is to hold down **shift** and select a file. The length will then be displayed at the top of the window.

## ZIP contents window

This window will appear if the filename you have selected ends with **.ZIP**. The window will list the whole contents of the **.ZIP** file in the listbox. From this list you can then select what file to access.

What will happen when you select a file depends on the current mode selected at the bottom of the window and the filetype.

On the bottom of the "Zip Contents" window you can select what you want to do with the file you select. The function of these buttons are the same as the ones in areaview window.

The **escape** key or "Go Back" button will close the window. If you press on the big "X" button, the first file in the list will be selected.

The viewer that will be activated depends on the extension of the file.

If the selected file ends with:

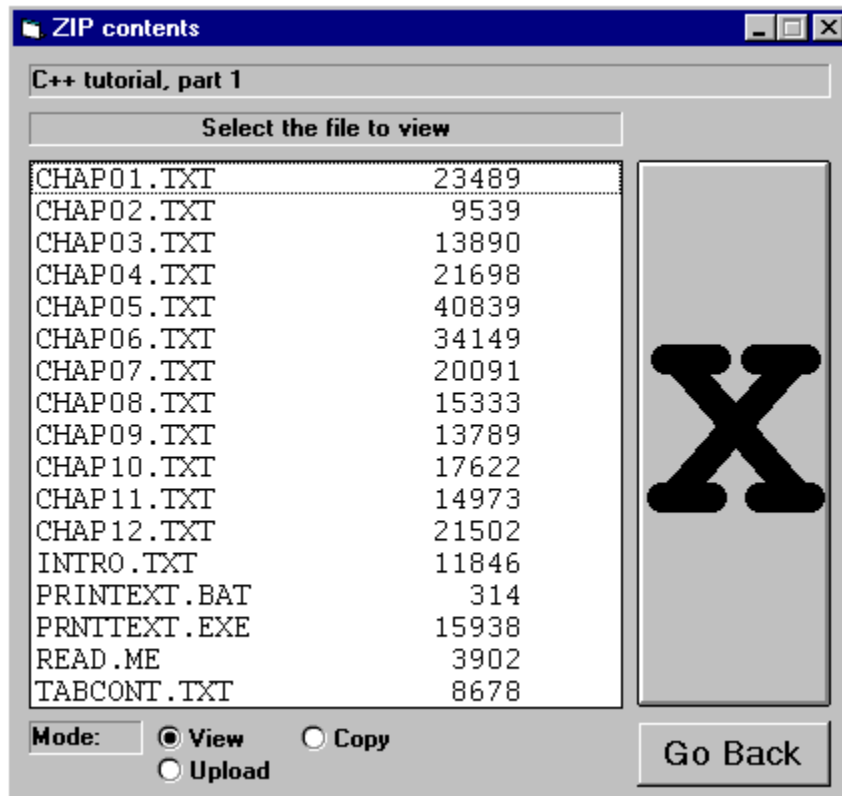
**.HLP** the software will try to view the file as a windows helpfile.

**.EXE, .COM, .ARJ, .ZIP, .LZH, .ZOO, .LHA** nothing will happen.

**.BMP, .GIF, .JPG, .IFF, .IMG, .PCX, .TGA, .TIF, DIB** the software will try to load the file as a picture in the graphicsviewer.

All other extensions will load the fileviewer.

The ZIP-window can look like this:





# Global Search window

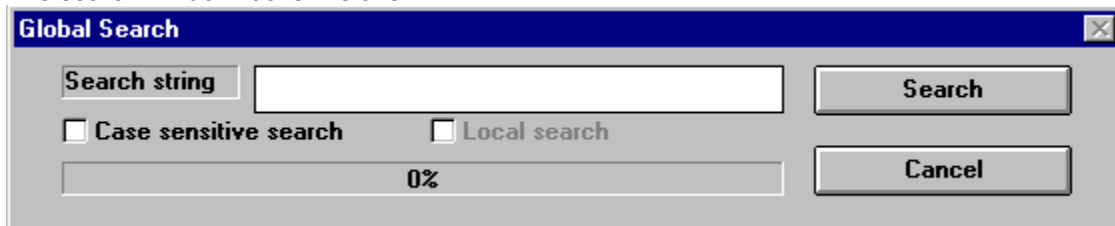
This window is used for searching for keywords in the filelist.

The **local search** checkbox is used for selecting if the search engine shall search in all areas or in the current selected area.

With the **Case sensitive search** checkbox you can select if the search should be case-sensitive or not.

When the search is completed the result is shown in the areaview window.

The search window looks like this:



# X-Viewer fileviewer

In this window the actual contents of the file is displayed.

You can use the scrollbar on the right or the Cursor/Page Up/Down keys to scroll the text up or down.

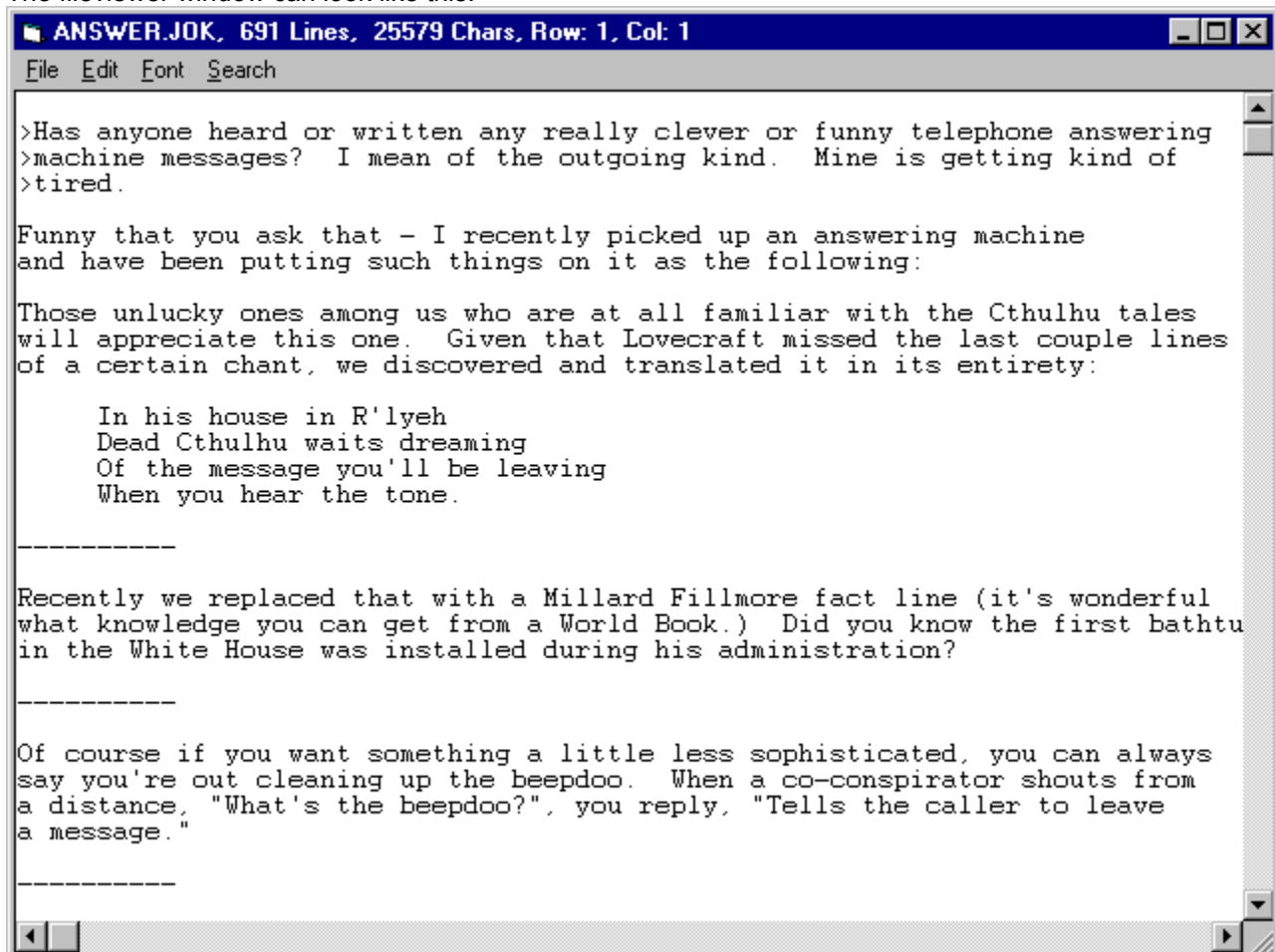
On the top of the Windows you can see the following parameters:

- \* Number of lines of the text
- \* Number of characters in the text (the filelength)
- \* The current row number the cursor is located on
- \* The current column the cursor is located on

## Menus

File  
Edit  
Font  
Search

The fileviewer window can look like this:





# File

## File

### **Save As**

Saves the text in the viewer to an external file. A fileselector will appear in which you can select the destination name, drive and directory.

### **Save Block**

Saves the selected block to file.

### **Printer Setup**

Here you can setup the printer.

### **Print text**

If you want to print out the text on your printer this is the right option for you. When this option is selected a messagebox is displayed with the amount of lines the text consists of. Press "OK" to start printing and "Cancel" return to the viewer without printing.

### **Close**

Returns you to the previous window. You can also use the **escape** key.



# Edit

**Edit**

**Copy**

Will copy the text you have selected with the mouse to the Windows clipboard. From there you can paste it into other applications.

# Font

Font

**Set Font**

Here you can set the font of the text.

# Search

## Search

### Find

You select this option to start a new search. A window will appear in which you can enter the keyword to search for.

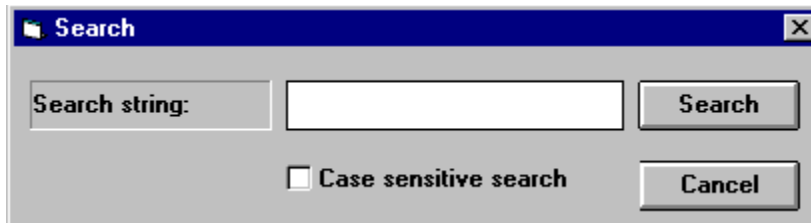
### Find Next

Finds the next line that matches the keyword.

### Find Previous

Finds the previous line that matches the keyword.

The search Window looks like this:



Search

## X-Viewer CD-Rom drive select

Here you can select the drive where the CD-Rom are CD located.

## X-Modem Upload

This function is useful if you want to transfer the file to an another computer or calculator using the standard RS-232 serial port.

X-modem is used as protocol for transferring the files. You can only Upload files in this viewer, not downloading. A special X-Modem uploading window will appear when you select a file. In this window you can select the desired communication speed and communication port. When the target machine is ready just press the "Start Transfer" button to start the upload. If you press the "Cancel" button while uploading the upload will be aborted. Just press the cancel button or the escape key to return to the previous window.

The "Send Teststring" button sends the following string to the serial channel "This is a teststring!". This function can be usefull when debugging the serial communication.

# Graphics viewer 1.0

This window will appear if the file you are trying to view has the following extensions:

**.GIF .JPG .BMP .IMG .PCX .TGA .TIF .DIB**

## Menus

File

Picture

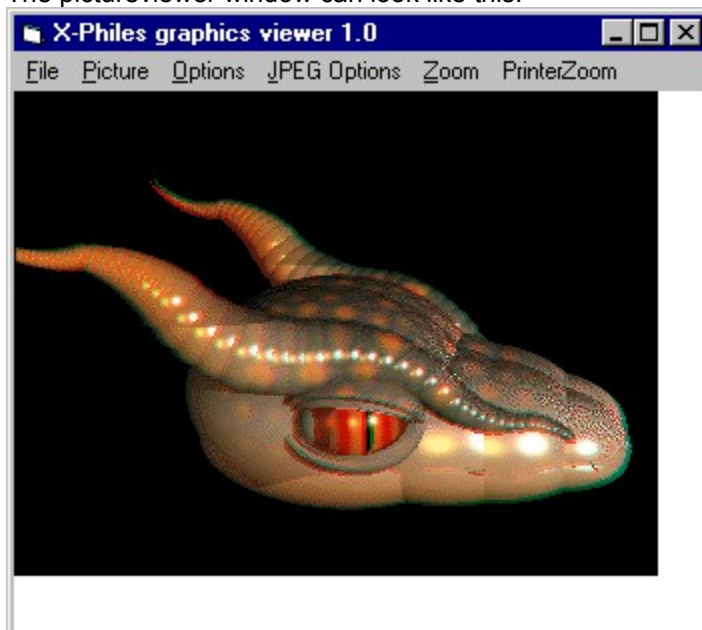
Options

JPEG Options

Zoom

PrinterZoom

The pictureviewer window can look like this:



# File

## File

### Printer Setup

Here you can setup the printer.

### Print

Prints out the picture to the printer setup above.

### Close

Go back to the last window.



# Picture

## Picture

### Open

Use this option to load a new picture.

### Close

Used for closing the current picture.

# Options

## Options

### Dithering...

**No Dithering**

**Dither Always**

**Dither Extra Colors**

This option allows you to select the dithering in the picture.

### Thumbnail

Shows a smaller version of the picture.

# JPEG Options

This is the options used when viewing JPEG compressed pictures. The options affects the speed and quality of the loaded pictures.

## **JPEG Options**

**DCT Method...**

**Slow Integer**

**Fast Integer**

**Floating Point**

**Dithering Method...**

**None**

**Ordered**

**Floyd-Steinberg**

**Fancy Upsampline**

**Two Pass Quantize**

# Zoom

Here you can set the zoom factor for the picture.

## **Zoom**

**100%**

**200%**

**300%**

**400%**

# PrinterZoom

Here you set the zoom-factor for the picture when it is sent to the printer.

## **PrinterZoom**

**100%**

**200%**

**300%**

**400%**

**500%**

# Main Window

The first window that will appear when you start the viewer is the extended arealist. This is the list of all the fileareas located on the CD and all the files on this CD can be found in these areas. A scrollbar will appear in the bottom of the list if all areas can't fit the window at the time.

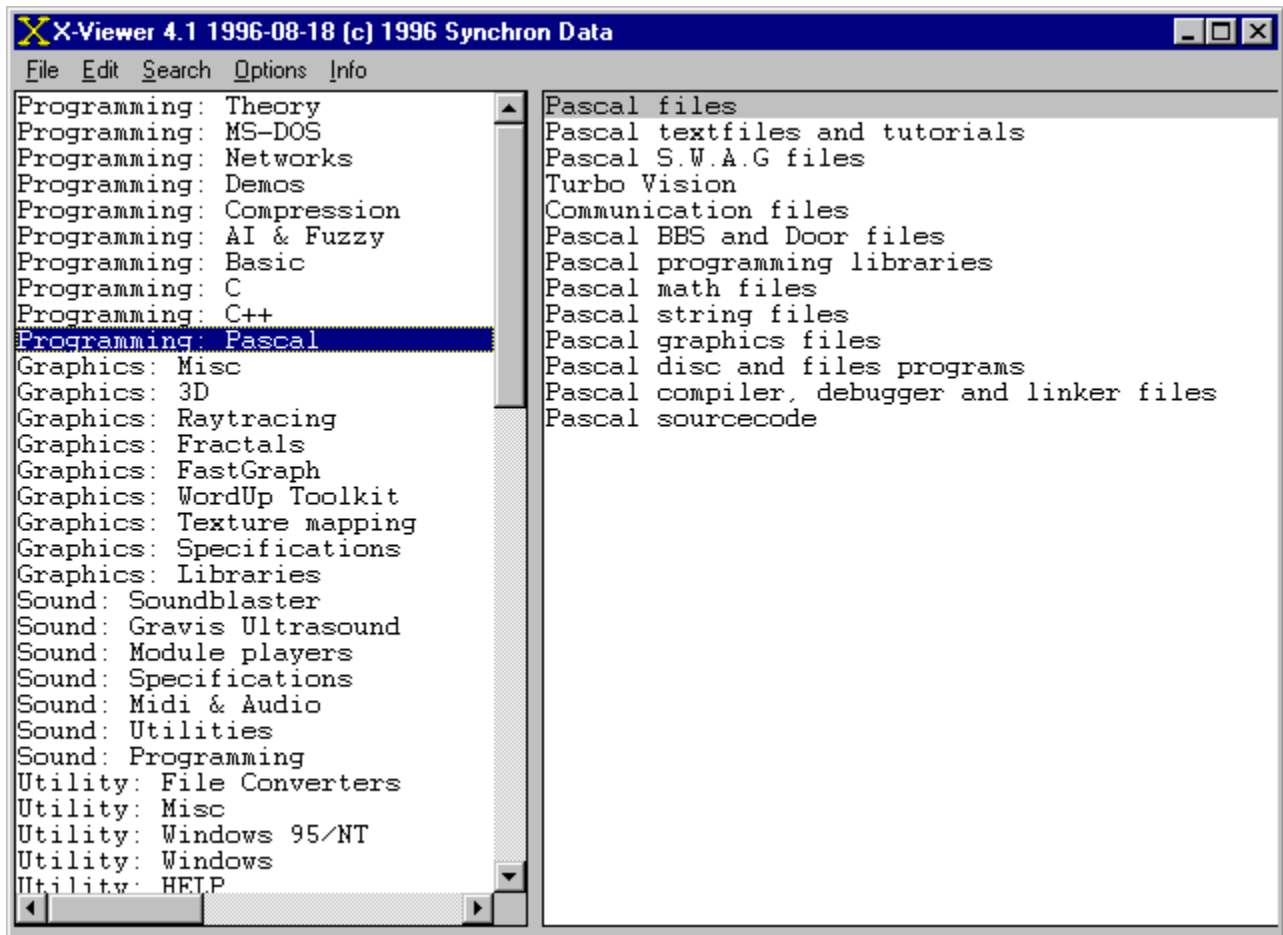
The menu on top of the window has the following choices:

## Menus

|                 |                         |
|-----------------|-------------------------|
| <u>F</u> ile    | Filehandling functions  |
| <u>E</u> dit    | Font settings           |
| <u>S</u> earch  | Global search functions |
| <u>O</u> ptions | Options                 |
| <u>I</u> no     | Information             |

When you select an area the following area-viewer window will appear.

The standard arealist can look like this:



# Introduction

Introduction to the X-CD Viewer.

This easy to use universal program are used to access all the CD-Roms created by Synchron Data. It lets you view and search the files in a easy way.

Many of the files located on this CD are **SHAREWARE**. her is a definition of shareware:

Shareware is an exciting marketing method which allows you to try top-quality software before you pay the author. With Shareware, you cannot be disappointed spending money for a program that's not right for you. The small fee you pay to us covers only the duplication and distribution costs, and permits you to evaluate the program.

If you continue to use the program, you must send the author an additional payment which may entitle you to technical support, printed manual, bonus programs, and more. Your payment supports authors, enabling them to continue writing newer and better Shareware programs.

## How to contact

# SYNCHRON DATA

Please write to us if you find any bugs or if you have some ideas for the future revision of our products.

The latest version of this viewer can be found either on our BBS or on our WWW page. On our WWW page you will find ordering and the latest information from us.

Distributors all around the world are welcome to contact us for more information about distribution of our products.

Our address is:

Synchron Data  
Tranbärsvägen 25:14  
S-372 38 Ronneby  
Sweden

You can also reach us at the following places:

BBS: +46 (0)431-17506  
email: [synchron@algonet.se](mailto:synchron@algonet.se)  
CompuServe: 100554,1465  
WWW: <http://www.algonet.se/~synchron>

Synchron Data an approved vendor member of the Association of Shareware Professionals (ASP). ASP wants to make sure that the shareware principle works for you. If you are unable to resolve a shareware-related problem with an ASP member by contacting the member directly, ASP may be able to help. The ASP Ombudsman can help you resolve a dispute or problem with an ASP member, but does not provide technical support for members' products. Please write to the ASP Ombudsman at 545 Grover Road, Muskegon, MI 49442-9427 USA, FAX 616-788-2765, or send a CompuServe message via CompuServe Mail to ASP Ombudsman 70007,3536.



## Tips and Tricks

Here are some tips to make your life easier using this program.

- Use the **ESC** key to quickly switch back to the last window.
- Hold down the **SHIFT** key and at the same time select a file and the filesize will show in the upper part of the window.
- Use the right mousebutton to close the current window.
- Use the cursor keys to move around in the extended arealist. Cursor left/right will switch list and cursor up/down will move the cursor up or down in the list. The Tab key can also be used to change current list.
- To speed up the pictureviewer you can try to change the settings in the pictureviewer menu.

WhatsNew

# Options

## Options

### **Extended Arealist**

Allows you to switch between the normal arealist and the extended arealist.

### **DoubleClick**

Here you can select if you want to doubleclick on the mouse when selecting files or not.

### **Close on right button**

This new feature makes it possible to jump to the previous window with a click on the right mousebutton.



